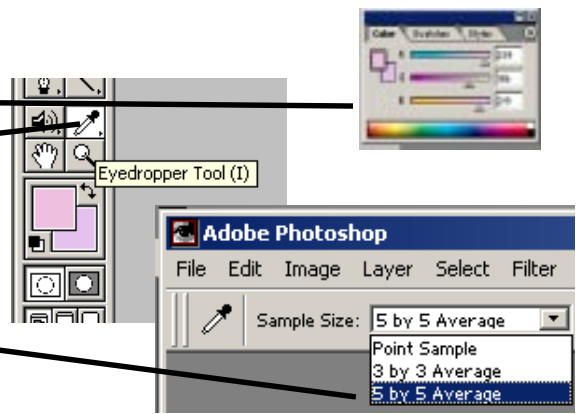
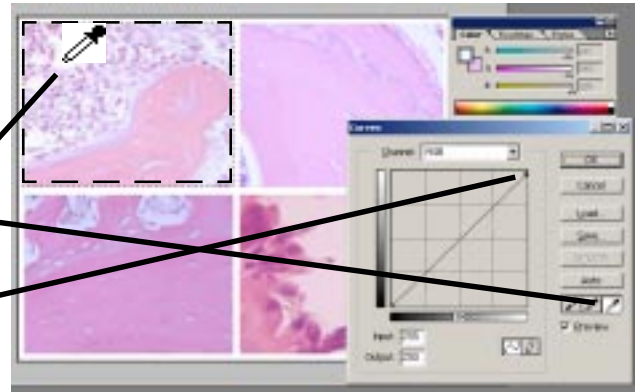


MATCHING COLORS - Among Several Images

1. Under Window, select Show Color
2. Double click on eyedropper tool
3. In Eyedropper dialogue box, adjacent to "sample size: click on arrow for drop down list and choose 5x5
4. With the lasso tool, select the "ideal image", the image to which all others need to be matched.



5. Under Image, highlight Adjust and select Curves.
6. In the bottom right of the Curves dialogue box, select the eyedropper tool on the far right (white). With the white eyedropper, click on the brightest area of your image. This will brighten up the highlight area of your image. To prevent from a "wash-out" white, move the top point of the curves-line down slightly.

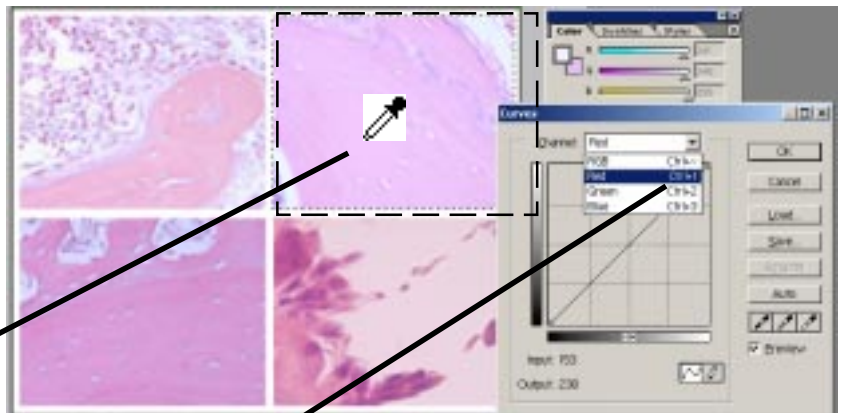


7. Repeat step 6 for the remaining images.
8. With the Eyedropper tool, click on background of the ideal image, the image to which all others need to be matched.



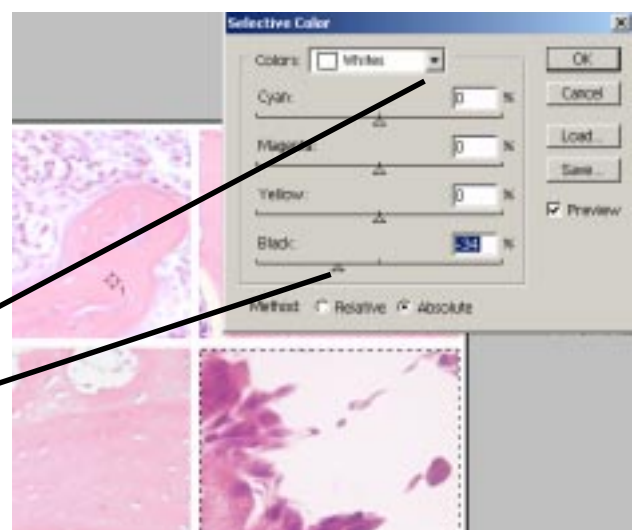
9. Write down the RGB (red, green, blue) values you see shown in the Color dialogue box (if you see CMYK values, click on top-right arrow and set to RGB)

6. With the lasso tool, select the area you want to fix.
7. Under Image, highlight Adjust and select Curves.
8. Click with Eyedropper tool on the background of the off-color image while the Curves dialogue box is open.

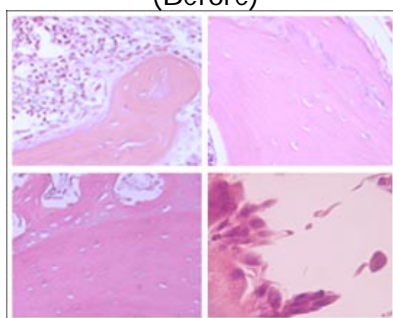


9. In Curves dialogue box, on the top "Channel: RGB" click on arrow for drop down list and choose Red. Pulling only on the top right point of the diagonal line to match what you wrote down for Red. Refer to the Color dialogue box to see the value changes for Red while pulling the Curves-line. Then do the same for Green channel, then Blue. This should get you close enough to fine-tune for a perfect match.

10. Note: After fixing with the RGB channels in Curves & your highlight area changes to different hue, you can try to clean the highlight area by click into Image, highlight Adjust, Selective Color. Choose White from the color box. With the "black" option, drag the arrow to the left until your highlight area is a clean-white.



(Before)



(After)

